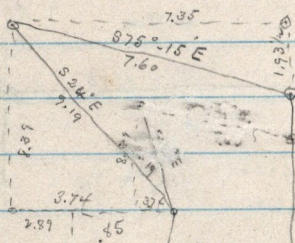


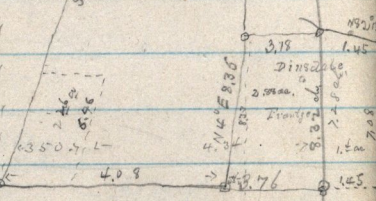
March 15-1887

Survey on NE 1/4 Sec 1 T6N R 2W,

14.25
 8.70
 23 0.0
 17
 40.



Joe R. Dinsdale
 to
 J.P. Prantzen
 10.14 ac.



5.166
 8
 5.74
 8.22
 17
 5.39

7.06
 3.76 ch

Handwritten notes and calculations at the bottom of the page, including numbers like 5.26, 5.166, and 5.39.